

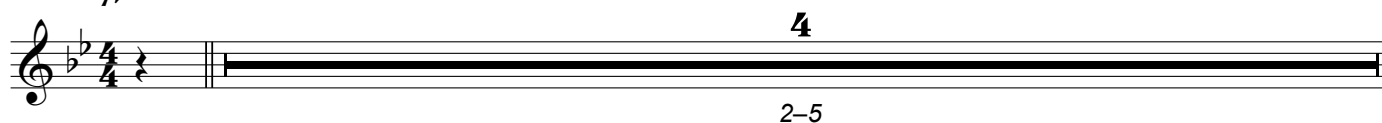
PIANO

© Eric Richards 2018 (BMI)

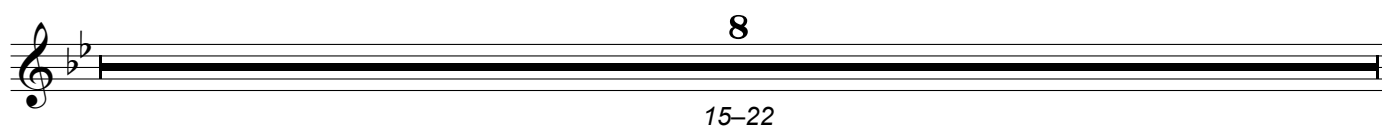
T.K.

Written in commemoration of the life of **Tom Kinnison** - ardent advocate and supporter of the arts in Sheridan, Wyoming.
Premiered by the USAF Falconaires jazz ensemble at Kinnison Hall, Whitney Center For The Arts - Sheridan College
Sunday, 23 September 2018

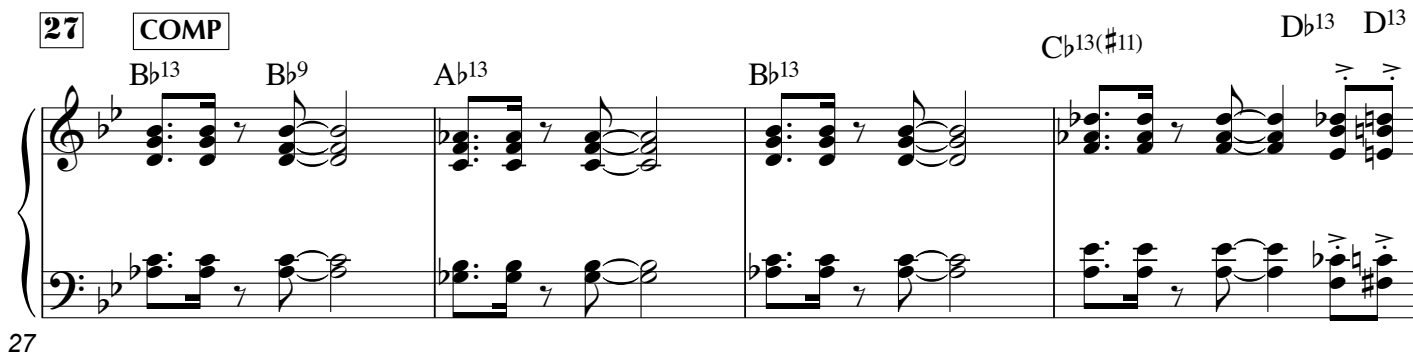
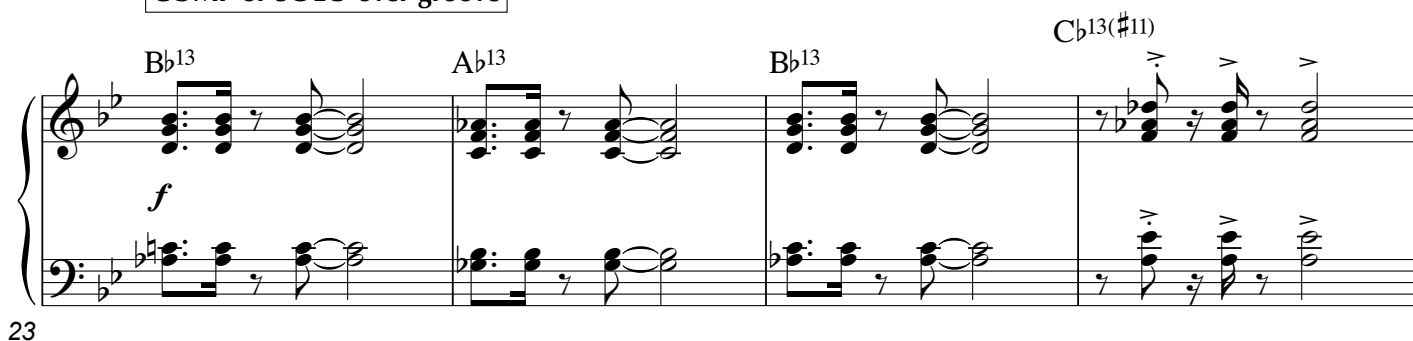
Freely; M.M. ♩ = 68



15 Funky "2nd LINE" Feel: M.M. ♩ = 100 (Swing 16ths)



COMP or SOLO over groove



$E\flat^{13}$ $A\flat^{13}$ $D\flat^{13}(\sharp^{11})$ $G\flat^{13}$ $A\flat^{13}$ A^{13} $B\flat^{13}$ $G7(\sharp^9_{\sharp^5})$ $D\flat^7/G$

31

Cmi^9 $B\flat(sus2)/D$ $E\flat^9$ $E^{\circ 7}$ $E\flat_{MA}^7/F$ $E\flat^7/B\flat$ $B\flat^{13}$

35

39 SWING FUNK

$E\flat^{13}$ $B\flat^{13}$ $E\flat^{13}$ $B\flat^{13}$

43

$A\flat^{13}$ $G7(\sharp^9_{\sharp^5})$ $G\flat^{maj9}(13)$ $D\flat^{13}$ $F7(\sharp^9_{\sharp^5})$

47 2nd LINE groove

$B\flat^{13}$ $B\flat^9$ $A\flat^{13}$ $B\flat^{13}$ $C\flat^{13}(\sharp^{11})$ $D\flat^{13}$ D^{13}

$E\flat^{13}$ $A\flat^{13}$ $D\flat^{13}(\sharp^{11})$ $G\flat^{13}$ $A\flat^{13}$ A^{13} $B\flat^{13}$ $G7(\sharp^9_{\sharp^5})$ $D\flat^7/G$

51

55

Cmi^9 $Bb(sus2)/D$ Eb^9 $E^{\circ 7}$ $EbMA^7/F$ **57** Gb^{13} $E^{13}(\#11)$

p *ff* *f*

59

Gb^{13} $E^{13}(\#11)$ Gb^{13} $E^{13}(\#11)$

63

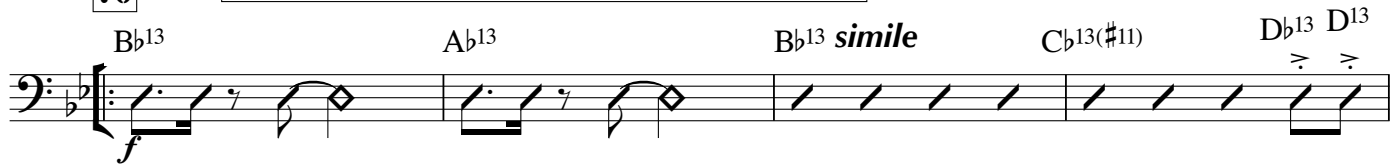
Gb^{13} $E^{13}(\#11)$ Gb^{13} G^{13} Ab^{13} Gb^{13}

67

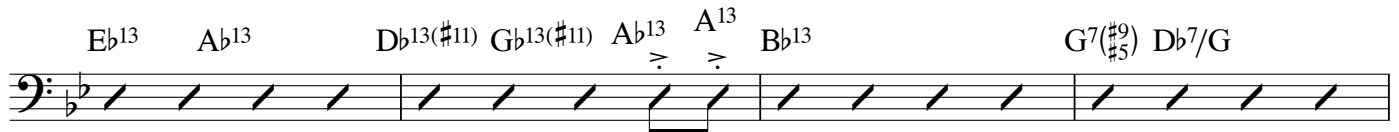
Ab^{13} $F^7(\#9)$ **- 1**

ff

OPEN for SOLOS (Backgrounds as desired ON CUE)
If only 1X-1 soloist, BKGDS IN @ 94

70

74



78

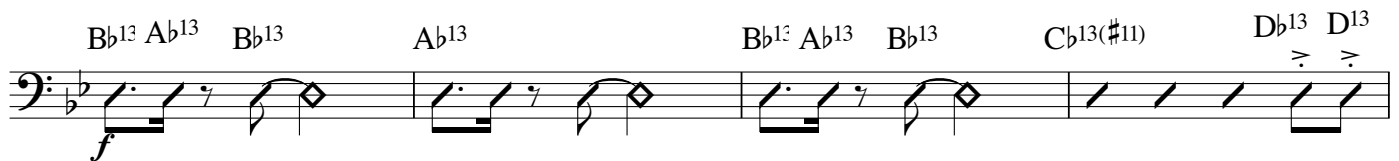


SWING
FUNK

(+ BKGDS. if only 1X-1 soloist)

82

86

**90****2nd LINE groove**

94



98



104 **Ens. Soli ON CUE**

HANDCLAPS

[illegible]

108

116

120

128 **SWING
FUNK**

$E\flat^{13}$
 $B\flat^{13}$
 $E\flat^{13}$
 $B\flat^{13}$

Musical score for "The Sound of Silence" by Simon & Garfunkel. The score is in G major, 4/4 time, and consists of two systems. The first system shows the piano introduction with a treble clef and a key signature of one flat. The bass line features a series of eighth notes and chords: $\text{D}\flat^{13}$, $\text{A}\flat^{13}$, $\text{G}^7(\sharp^9)$, and $\text{G}\flat^{\text{maj}9(13)}$. The second system shows the vocal melody in the treble clef and the piano accompaniment in the bass clef. The piano part includes chords $\text{F}^7(\sharp^9)$ and $\text{G}\flat^{\text{maj}9(13)}$. The vocal melody is in G major and includes the lyrics "Hello, hello, silence, silence, silence, silence".

132

2

A musical staff with a bass clef and a key signature of one flat (B-flat). A thick black line, representing a whole note chord, spans the entire staff from the first to the last measure.

138 2nd LINE groove: Bring It Home!

142

ff

p *ff* *mf* *f*

146

149

Chords: B \flat 13, B \flat 9, A \flat 13, B \flat 13, C \flat 13(#11), D \flat 13, D13, E \flat 13, A \flat 13, D \flat 13(#11), G \flat 13(#11), A \flat 13, A13, B \flat 13, G7(#9 #5) D \flat 7/G, Cmi9, B \flat (sus2)/D, E \flat 9, E \flat 7, E \flat MA7/F, C#m9, B6/D#, E9, F \flat 7, F#13(#11).

152 OPEN for Group JAM: "Build the SWIRL..."

f

Chords: B \flat 13, A \flat 13(#11), B \flat 13, C \flat 13(#11).

156 ONward ON CUE

160

Chords: B \flat 13, A \flat 13(#11), B \flat 13, C \flat 13(#11).

164

Bb^{13} $A\flat^{13}(\sharp 11)$ Bb^{13} $A\flat^{13}(\sharp 11)$ $G7(\sharp 9)$ $G\flat^{maj9}(13)$

170 Freely; M.M. ♩ = 60

SOLO - molto expr.

167

$B\flat^{maj9}$ $A\flat^{maj7}/B\flat$ $E\flat^{maj9}$ $A\flat^{13}(\sharp 11)$

172

Gm^9 $/F$ $E\flat(sus2)$ $B\flat(sus2)/D$ Cm^7 Am^{11} $D7(\flat 9)$ $E\flat^{maj9}$ $A\flat^{13}(\sharp 11)$ $E\flat^{13}$ $B\flat(sus4)/D$

Ped. _____ ^

176

(N.C.) very freely ♩ = 60

180

on CUE

f ff

Ped. _____ ^

e.j.r.
12 Sep 2018